

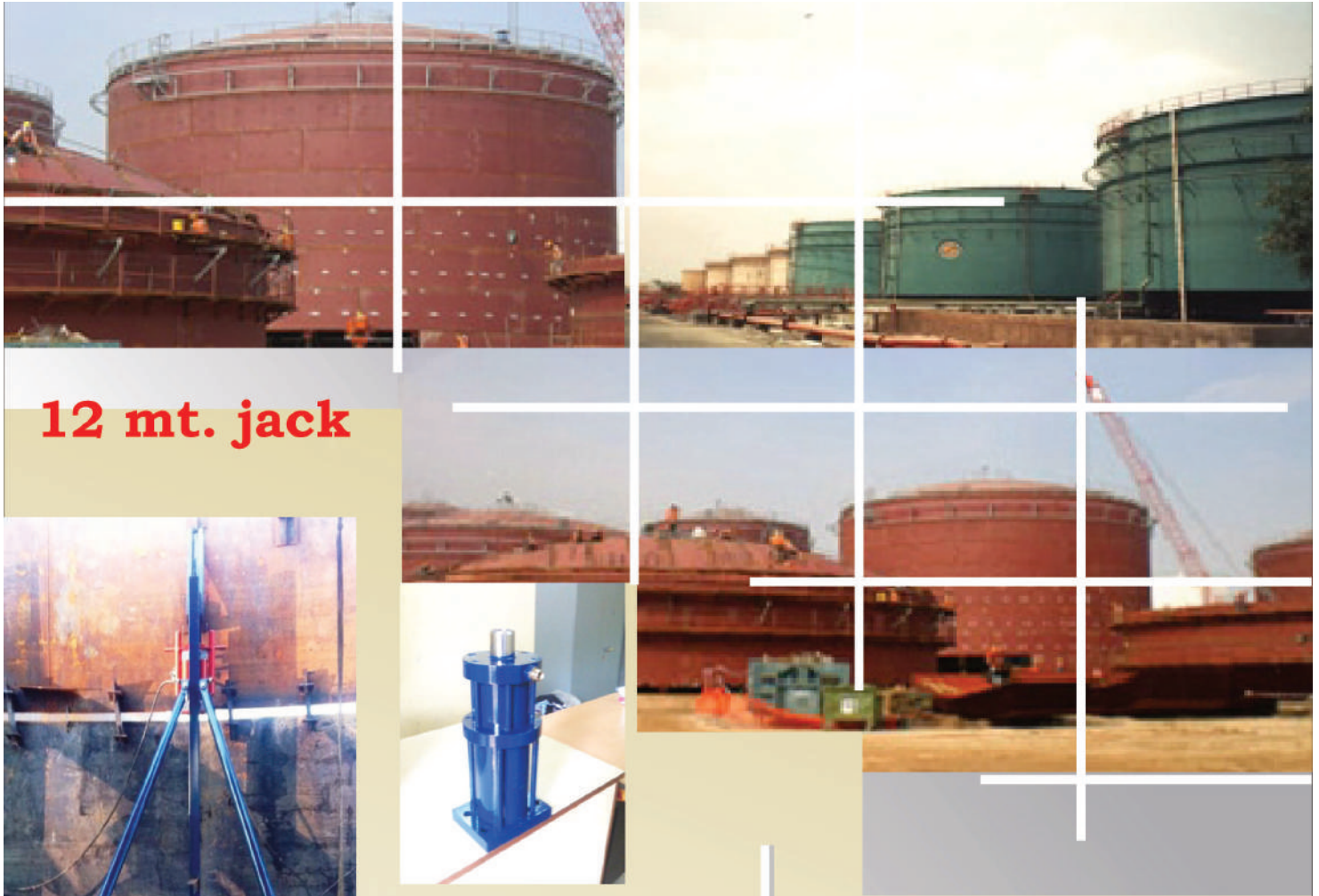
MASKO TECH ENGINEERS



PRODUCT CATALOGUE



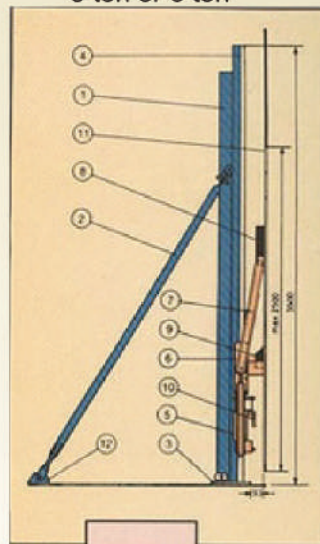
Hydraulic Jacking Equipments Experts



12 mt. jack



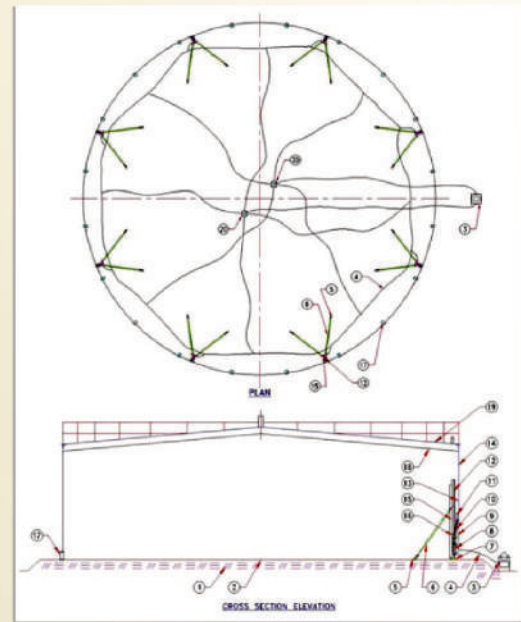
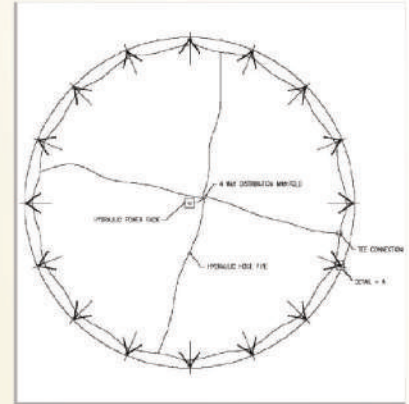
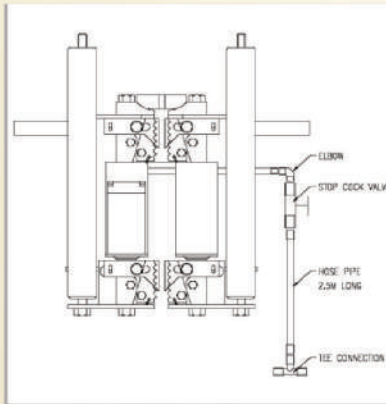
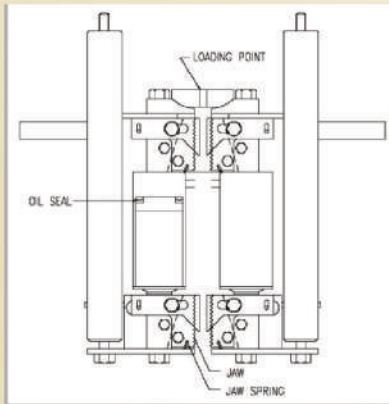
Slipformjack
3 ton or 6 ton



Detailed Description Of Complete Jacking
And Assembly Of Lifting Testles

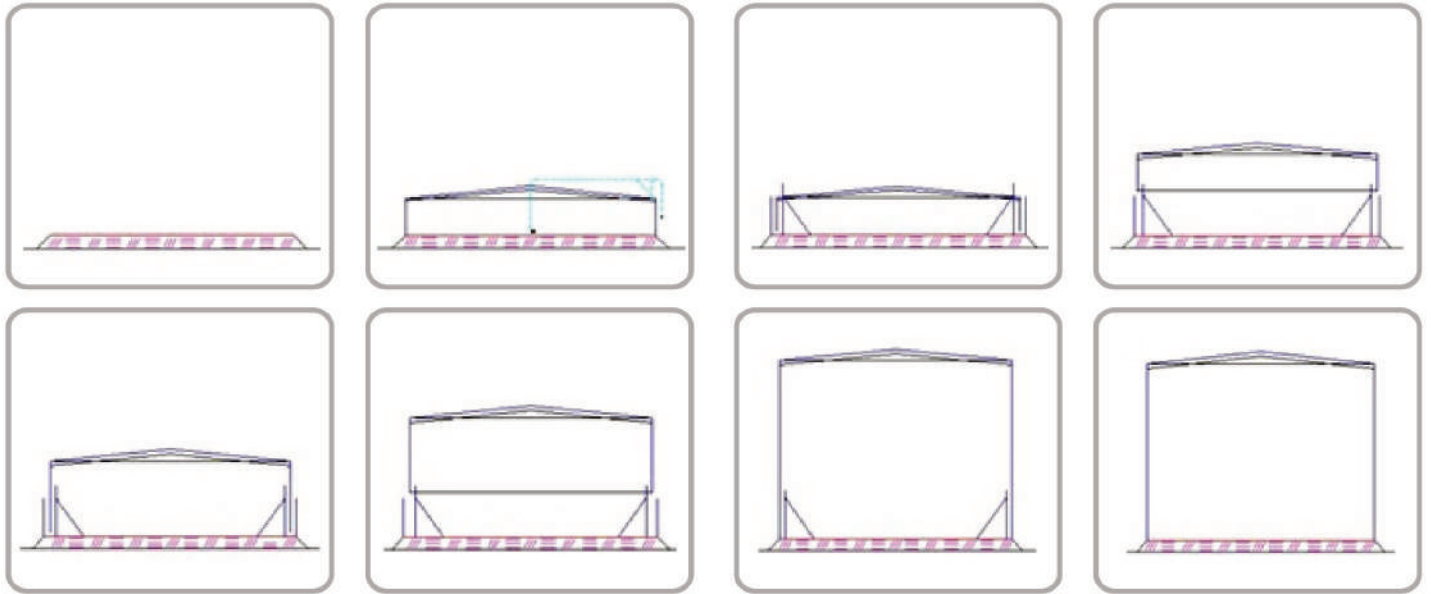
Detailed Description Of Complete Jacking And Assembly Of Lifting Testles

1. Trestle Box X 100 x 100 x 3.5
2. Supporting Pipe
3. Base Plate Attached With Trestle Box
4. Jack Rod
5. Hydraulic Jack
6. Sliding Chair
7. Lifting Arm
8. Clit Plate (for Lifting Arm)
9. Clit Plate (for Sliding Chair)
10. N.C.V. With Coupling For Hose Pipe
11. Shell Plate
12. Bottom Clamp (for Supporting Pipe)
13. Top Clamp (for Supporting Pipe)
14. Stud 1"x380mm
15. Bolt 3/4"x3"
16. Bolt 3/4"x6"
17. Loading Point



Power Pack

| | HP - 24 - 120 | HP - 34 - 120 | HP - 45 - 120 | HP - 65 - 120 | HP - 85 - 120(*) | HP - 120 - 120 |
|--|---------------|---------------|---------------|---------------|------------------|----------------|
| Max working pressure, kg/cm ² | 120 | 120 | 120 | 120 | 120 | 120 |
| Motor kW / HP | 7.5 | 10 | 15 | 20 | 30 | 40 |
| Tank volume, litres | 120 | 120 | 120 | 400 | 600 | 1100 |
| Number of lifting jacks per pump, max | 24 | 34 | 55 | 65 | 85 | 120 |



These Jacking System is been used all over the world.

It provide you safety, accident free, speedy and accurate erection . As all the fabrication is done at the ground level.

This method of jacking sysytem is user's friendly versatile highly efficient and it has become a standard norm in the tank fabrication industry

- The foundation is made ready
- The base plate is laid out welded
- The periphery of the Tanks is marked out on the base plate
- Guide trestle for the shell plate are erected
- The top shell plates are erected and welded vertically
- The roof trusses are assemled and joined to top shell
- Lifting trestle with hydraulic jacks are fitted internally along with the periphery of the tank
- Lifting lugs & guides are welded to the shell plate
- The top shell plate and the roof construction are lifted at the same time
- When the last shell plate is lifted slightly so that the guide trestle can be dismantled .
- The tank is lowered and the shell plate and base plate are welded together .
- The jacking equipment is dismantled

First the top layer is welded and the roof structure is erected

The whole top is lifted up just enough to give space for the second layer.

Which is then welded to the first. The operation of lifting and welding is repeated until the full height of the tank has benn achieved .

* We provide guaranty for one year 12 ton cap

* 18 ton Jack's and double acting power pack used for tank desmentaling & erection .



MASKO TECH ENGINEERS

Vijay Plot Main Road,

Opp. Jaipur Golden Transport Co.

Rajkot - 360 002

Mob: +91 8238301833

Email: contact@maskotech.com ; Web: www.maskotech.com